

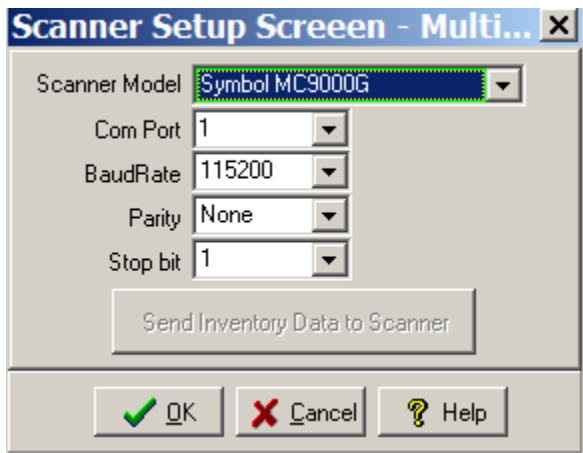
How to send data to RTProSL from Motorola MC9000/MC3000 Scanner using Windows Mobile Device Center

Instruction is based on Windows 7.

On Windows 7, Windows Mobile Device Center is already installed on computer by default but on older versions like Windows XP, you need to first download and install ActiveSync.

<http://www.microsoft.com/download/en/details.aspx?id=15>

Make sure **Symbol MC9000G** is selected as scanner inside Scanner Setup Screen.



In this method, the data stored in the scanner will be sent to computer via Active Sync (Windows Mobile Device Center) using USB cable. First connect the cradle to computer using USB cable. Then put the scanner on the cradle and wait for "**Windows Mobile Device Center**" dialog box to appear.



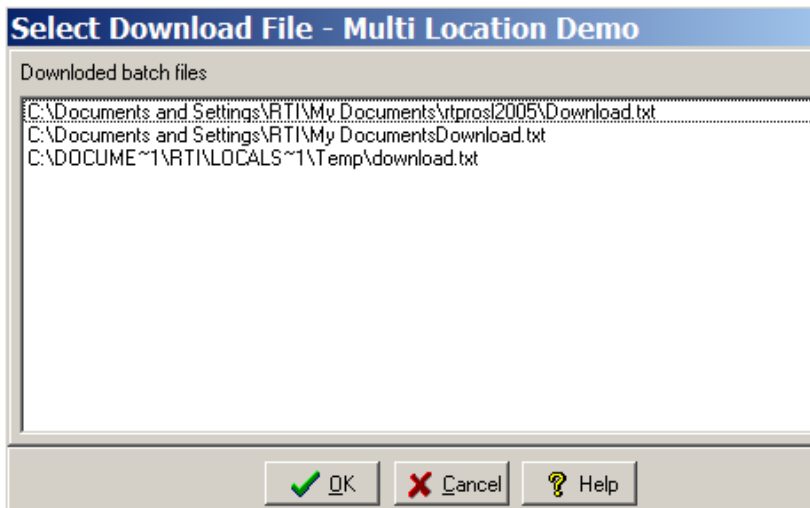
Select "Set up your device" and follow the steps to create a partnership between scanner and the computer. For the last step, make sure "Files" is selected. (Other checkboxes can be unchecked.)

Steps described above needs to be done only once on each computer.

From now on, every time that you connect the cradle to this computer and put the scanner on cradle, scanned data will be automatically copied to computer.

To upload the data in the scanner, put the scanner on the cradle and from RTPro desktop open Download Batch Scanner Screen. This is available from the Main screen of RTPro, also from Order Processing, and the checkout and checkin screens. They all operate the same.

You need to select "Upload From File" from Action menu. RTPro will show a dialog, similar to the one below, to select the downloaded batch file. Simply select the proper downloaded batch file and click OK.



RTPro will process the data and will display the result on the screen.