

RTPRO IMAGE APP



By

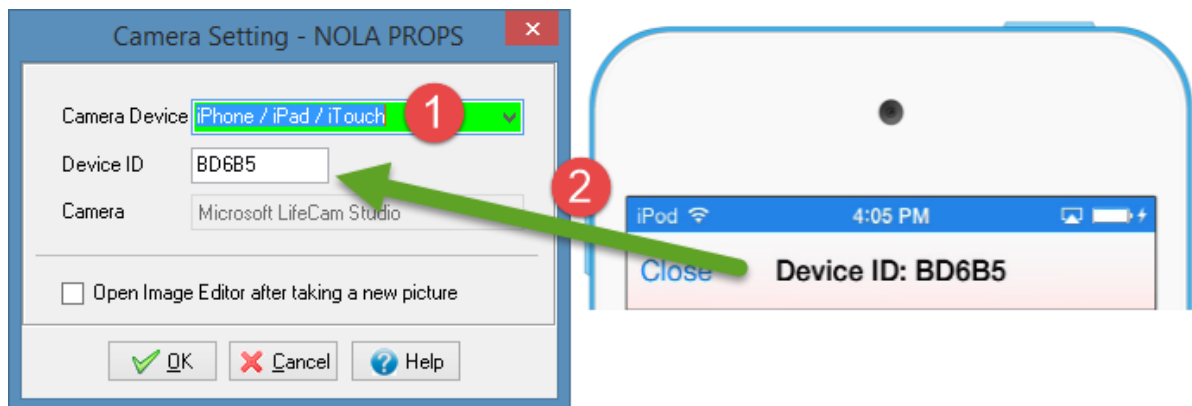
Rental Tracker, Inc.
2015

DOWNLOAD FROM APP STORE



HOW TO SETUP

1. After downloading and running the app, select setting.
2. Type in the password and select "Download Setting". Please contact us to get the password.
3. You should see your company name appears on top of the screen.
4. Open RTPro Application on your computer.
5. Select "Camera Setting" from the file menu.
6. Select "iPhone / iPad / iTouch" as camera device and fill in the Device ID. You can find it on setting page of App.



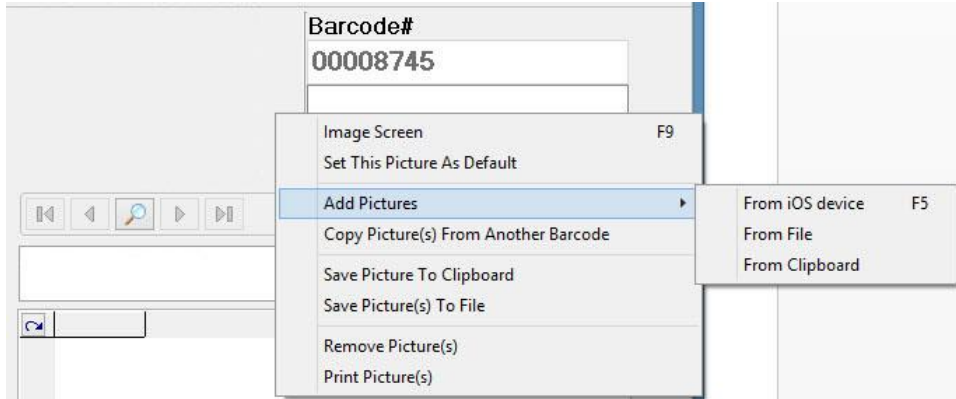
7. Press OK.

MODES

PC Link Mode

In this mode RTPro sends a request to mobile device and user can take a picture using mobile device and send it to RTPro. This is supported on all screens with image including Barcode, Noncode items, Repair and ...

1. Inside RTPro right click on image area and select "Add Pictures → from iOS device" or simply press F5.
2. On the mobile device select "PC Link" and then select start.
3. Take your picture using mobile device.
4. RTPro will receive the image and add new image to image area.



Notes) Mobile device should be connected to internet or if your company is running the web service internally, mobile device should be connected to the same network.

Direct Mode.

Using this mode, you can view the image of barcodes inside mobile device, add new image or delete the existing one. To use this, simply select "Direct" from main page and type in the barcode or scan it. You can use the built in camera to scan the barcode or use hardware barcode scanner. We currently support following hardware barcode readers.

- [Linea Pro 5](#)
- [Motorola CS3070](#)

